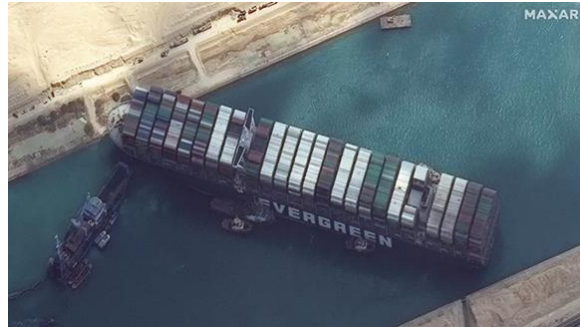


Disruption of International Logistics and Current Status of Countermeasures by Shipper Companies



<https://k-on-consulting.net/>

グローバル物流改善コンサルティングオフィス (GLiCO)



Global Logistics innovation
Consulting Office (GLiCO)
<https://k-on-consulting.net/>

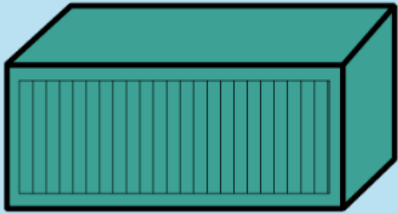
Carlos K.Ogiwara 2022/12/1

(1) World trade volume is expressed in the number of containers (20TEU)

※TEU=Twenty Foot Equivalent Unit

40FT Container=20FT Container x 2

20FT



外 寸: L6058 * W2438 * H2591mm

内 寸: L5899 * W2352 * H2386mm

内容量: 33.1 m³

40FT

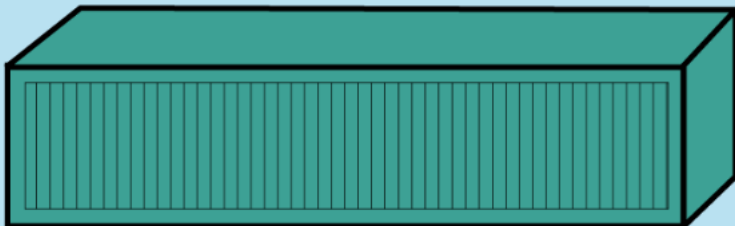


外 寸: L12192 * W2438 * H2591mm

内 寸: L12033 * W2352 * H2386mm

内容量: 67.5 m³

40HQ



外 寸: L12192 * W2438 * H2896mm

内 寸: L12033 * W2352 * H2691mm

内容量: 76.2 m³

Container Ship(Vessel) 8,000TEU Type

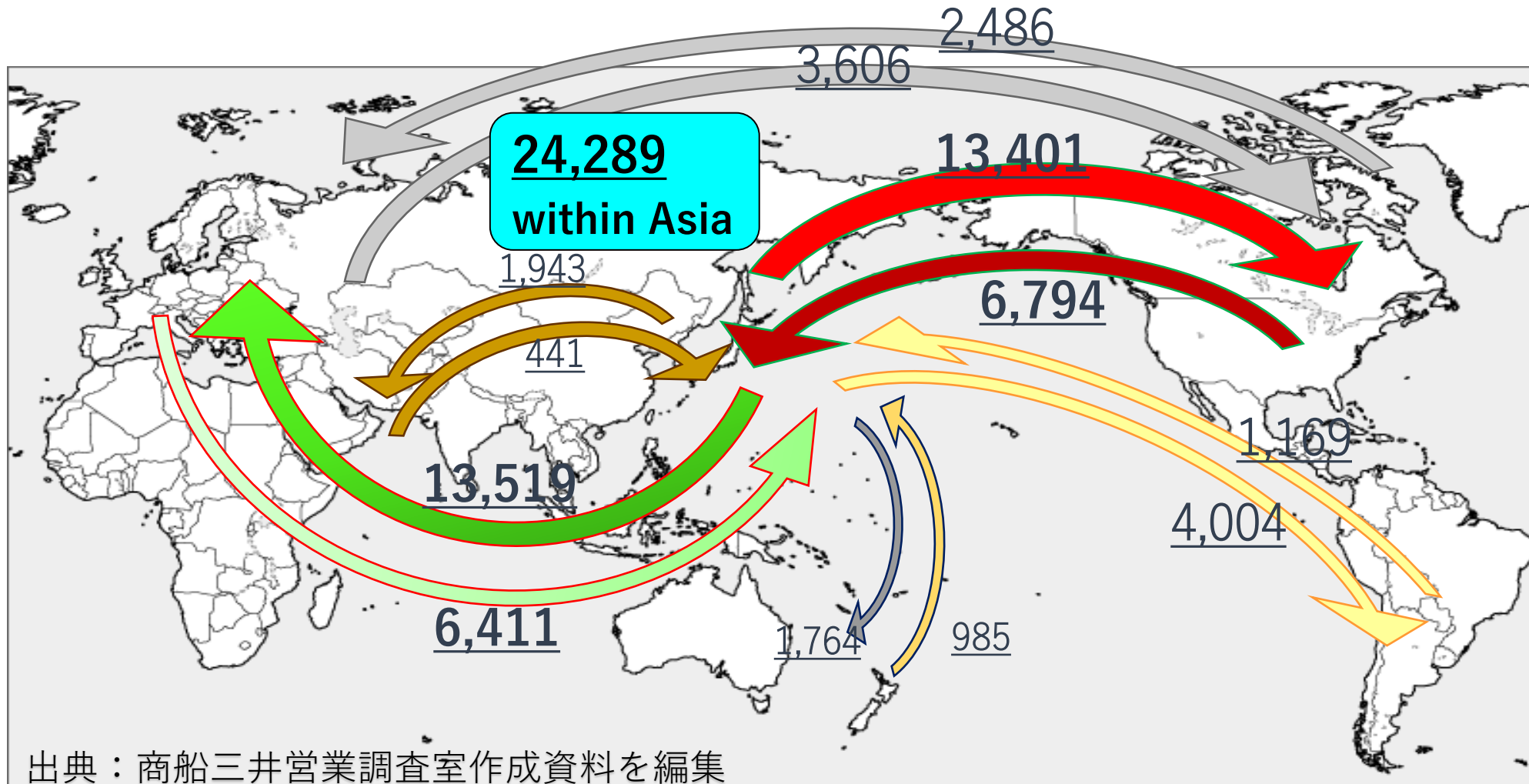


CY (Container Yard) at the Port of Manila



Global Container Cargo Movement (laden) (2012年)

(unit : 1000TEU)



出典：商船三井営業調査室作成資料を編集

North American route/European route = East-West route = Core route

Large container ship grounding accident in the Suez Canal (2021/3/23) ➡ The cause of the accident is overloading



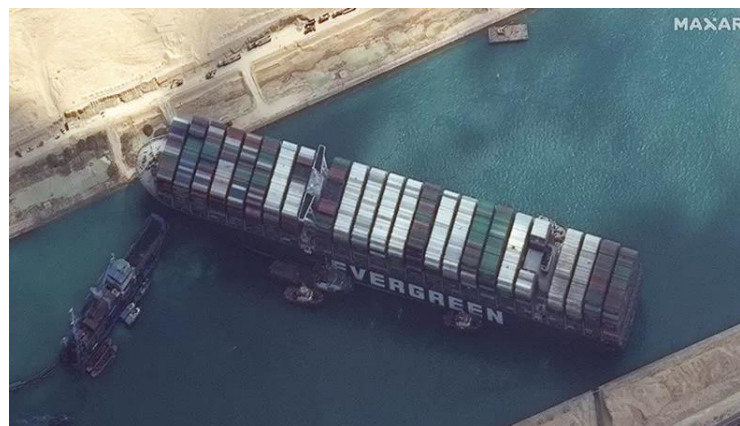
出典：朝日新聞デジタル
(スエズ運河庁提供)



出典：産経新聞デジタル(同左)



出典：Nikkei Business.com



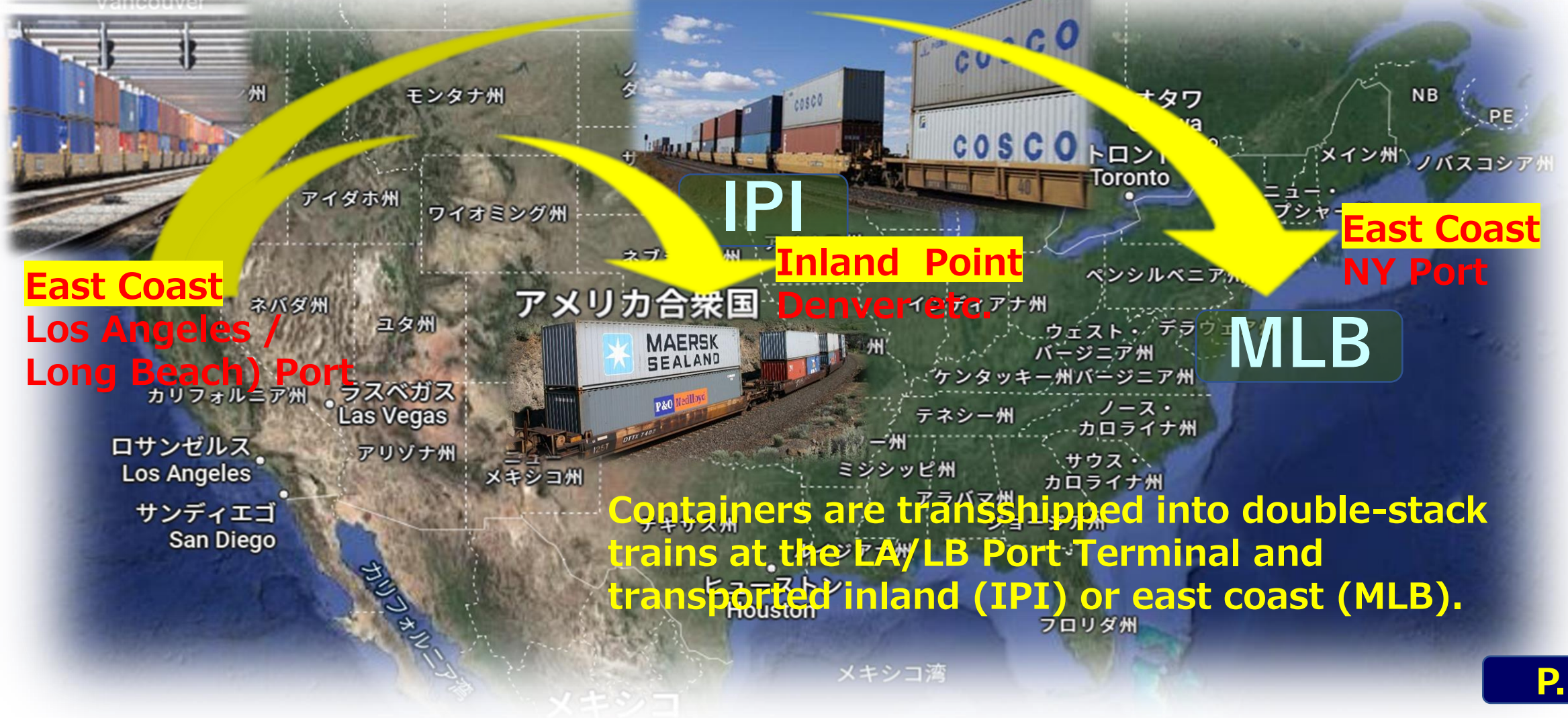
出典：BBC Web News

<March 2021, grounding accident>・The ship "Ever Given"・Registration: Panamanian flag・Ship owner (owned): Shoei Steamship・Navigate by: Ever Green・Cause of stranding: It is believed that the ship deviated from the route due to strong winds and ran aground due to lack of visibility due to the sandstorm.・Course: The Suez Canal Authority announced that a total of 422 ships had stopped due to the accident at the time of resumption of passage, and that all ships had completed passage on April 3 and returned to normal conditions.

Disruption of rail transportation (intermodal transportation) in the United States

MLB (Mini Land Bridge)・・・ Transcontinental route by rail from the West Coast to the East Coast of the United States

IPI (Interior Point Intermodal)・・・In the case of stopping at inland cities



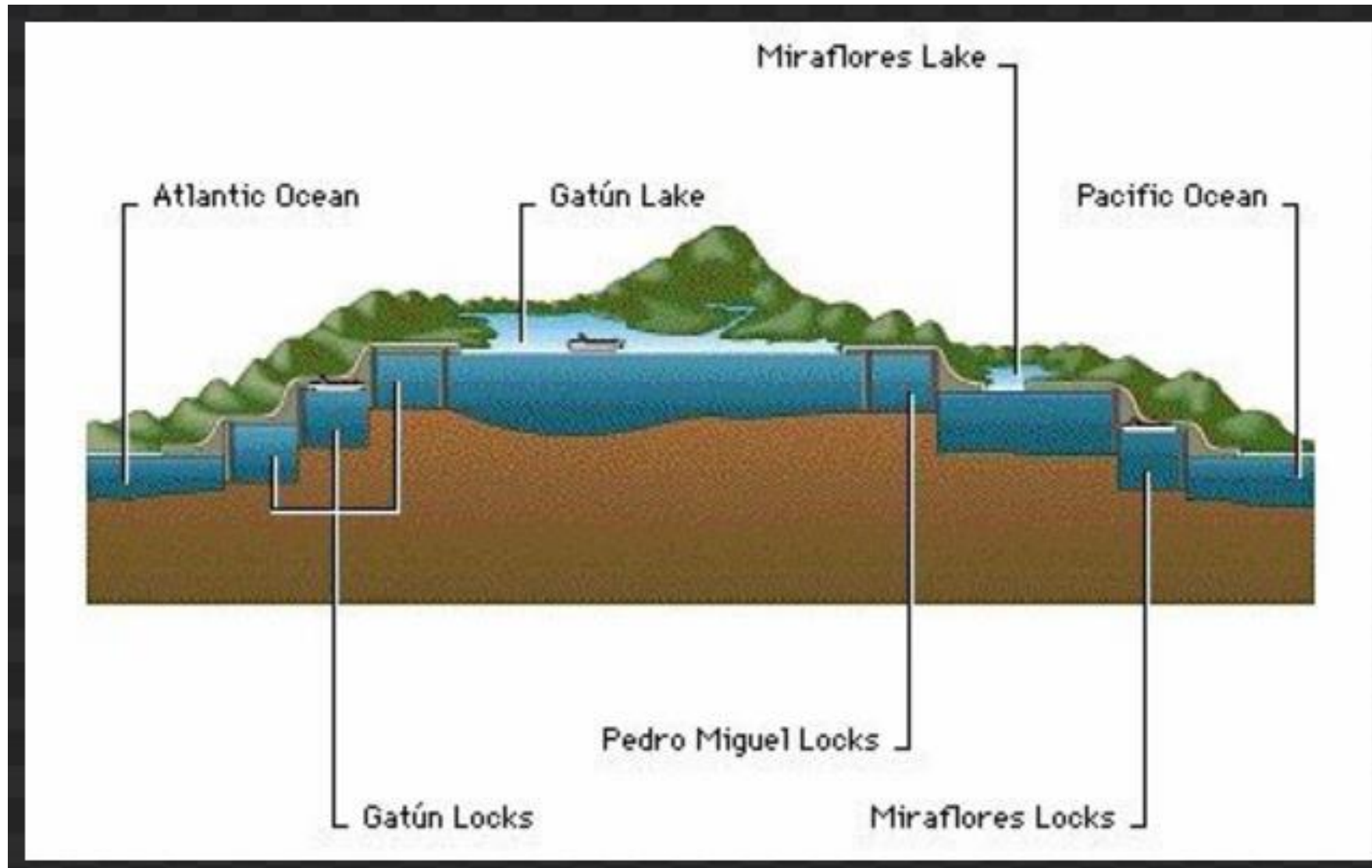
Container cargo ships usually pass through the Suez Canal to sail from Asian countries to Europe. And if the ship goes to the east coast of the United States, it will pass through the Panama Canal.



Panama Canal.



Panama Canal.



Panama Canal.



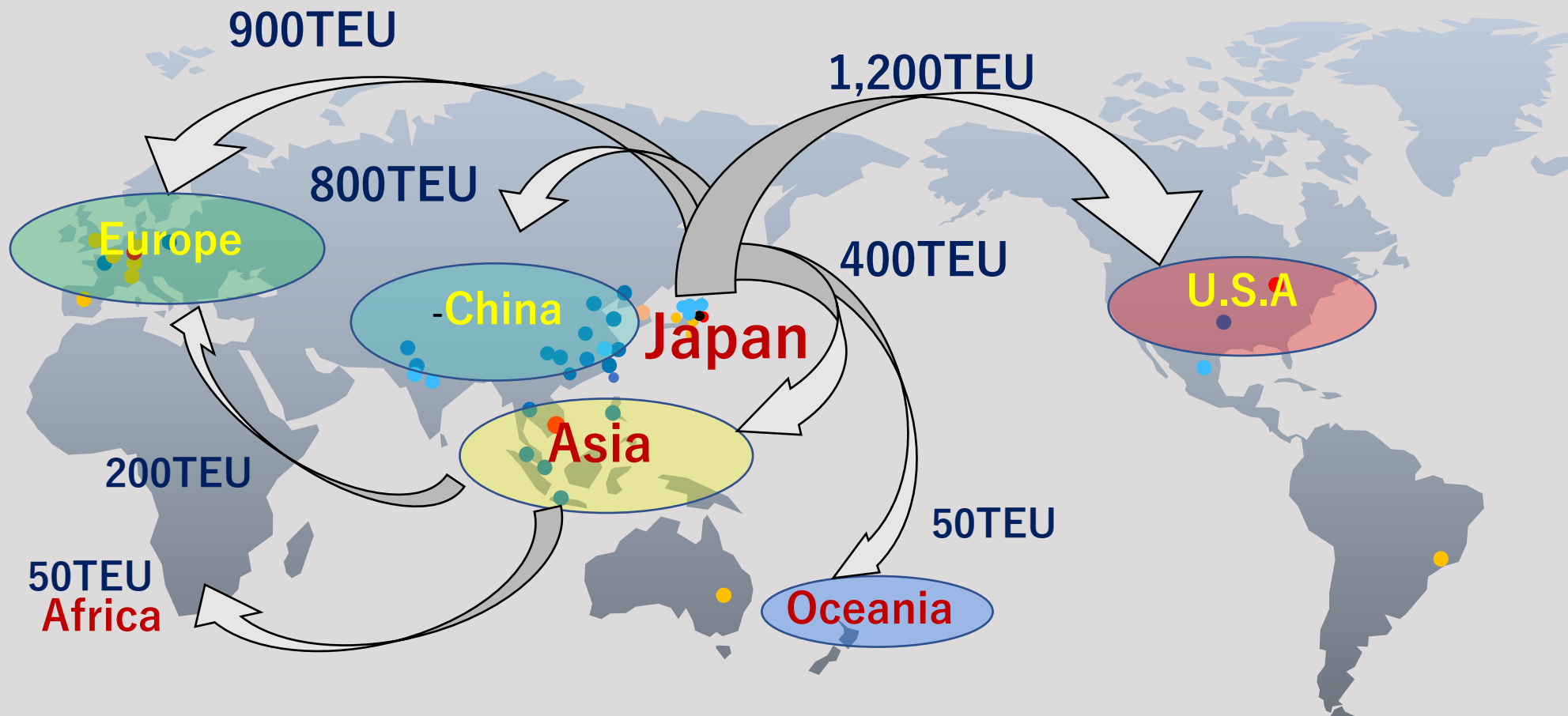
Suez Canal



★ ABC Corp. Global Transportation Routes

Export routes from Japan and Asia (3,600TEU)

(Plan of 2023)



[One of the reasons why the inland railway exacerbated the confusion] In the United States, the western region is dominated by two companies, UP and BNSF, and the eastern region is dominated by two companies, NS and CSX. This time, disruptions in rail transport caused cargo to stagnate at port facilities, and clogged supply chains aggravated the situation.



出典：BNSF のHPより

出典：UP (Union Pacific Railroad) のHPより



出典：BNSF (Burlington Northern Santa Fe Railway) のHPより

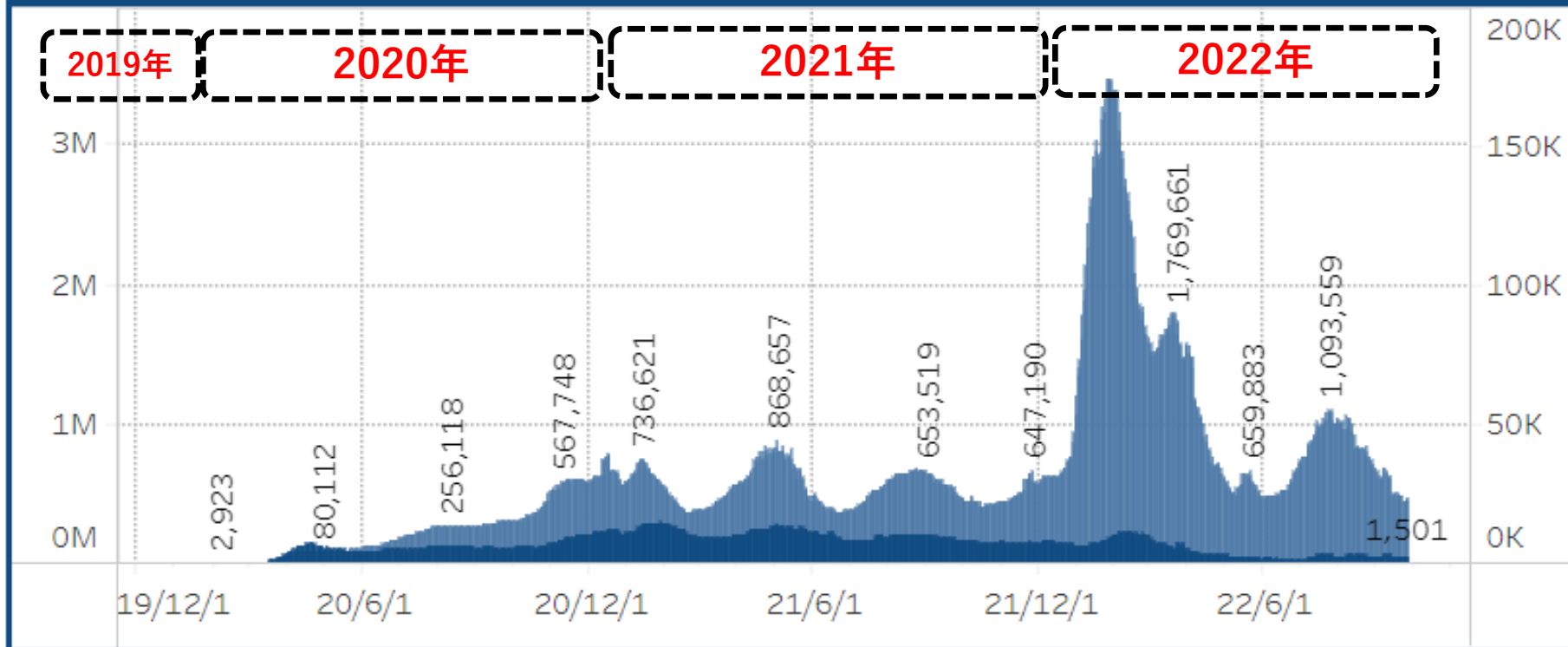


(2) Why did global port congestion and delays in marine transport occur?

Changes in the number of new coronavirus
new infections and deaths in the world

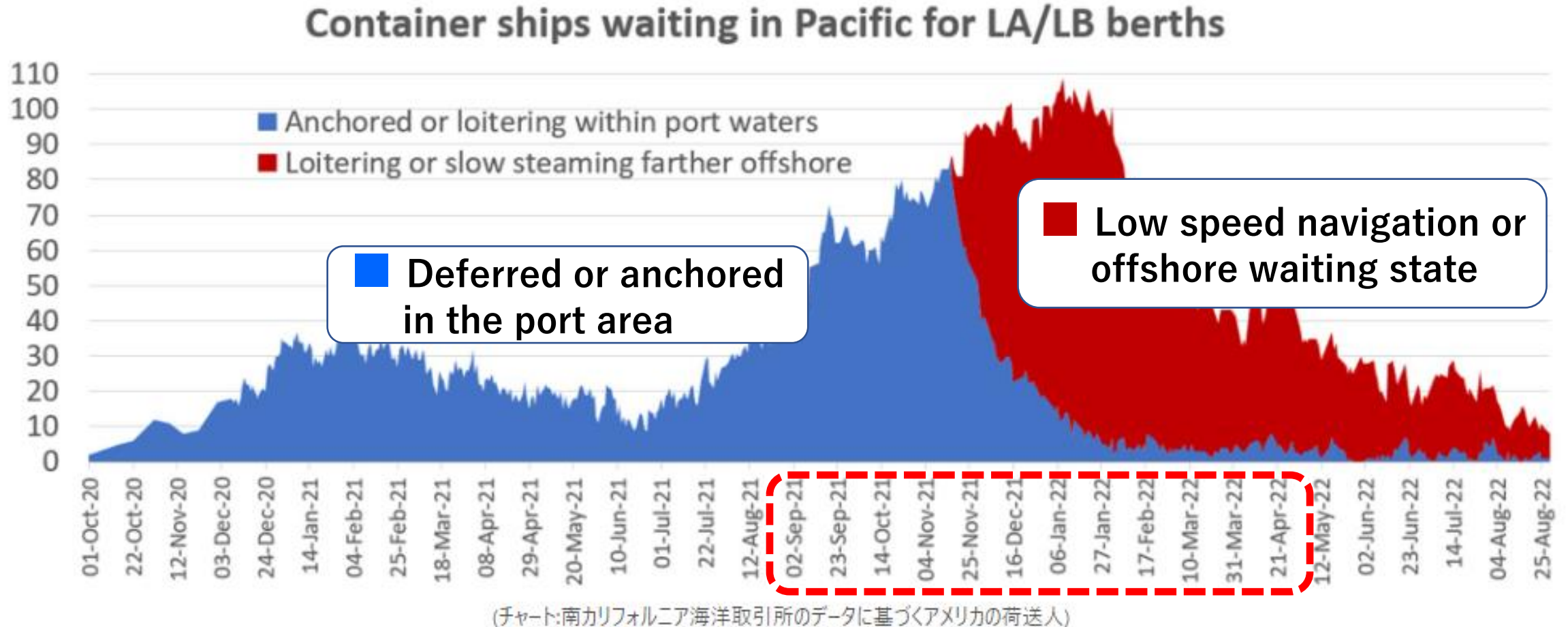
典：日テレ Web News

(Number of Confirmed Cases)



Needless to say, it is caused by the infection of the new corona.

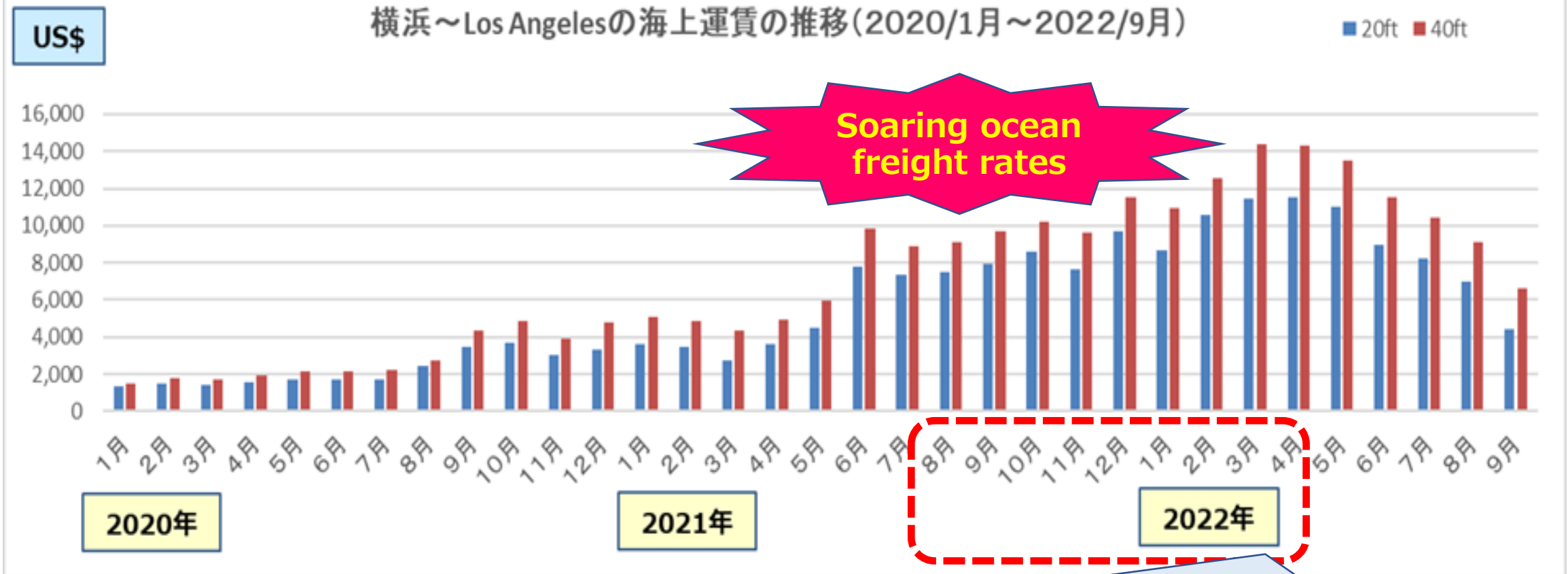
【 Container ship waiting at the Port of Long Beach, Los Angeles】 2020/Oct.~2022/Aug.



Source : Freight Waves Inc.USA <https://www.freightwaves.com/news>より一部抜粋、2022/8/30
(チャートの出所：カリフォルニアの海事関係 NPO: Marine Exchange of Southern California の Facebook)

(3) What is the impact of the lack of space on container ships on ocean and air freight rates?

① (1) Ocean freight rate transition for Yokohama~Los Angeles (Period: January 2020 ~ September 2022) 【出典】 《Drewry “Container Freight Rate Insight” 》を基にグラフ作成



During the busy season at LA/LB Port, there were 109 ships waiting off the coast (January 2021)